

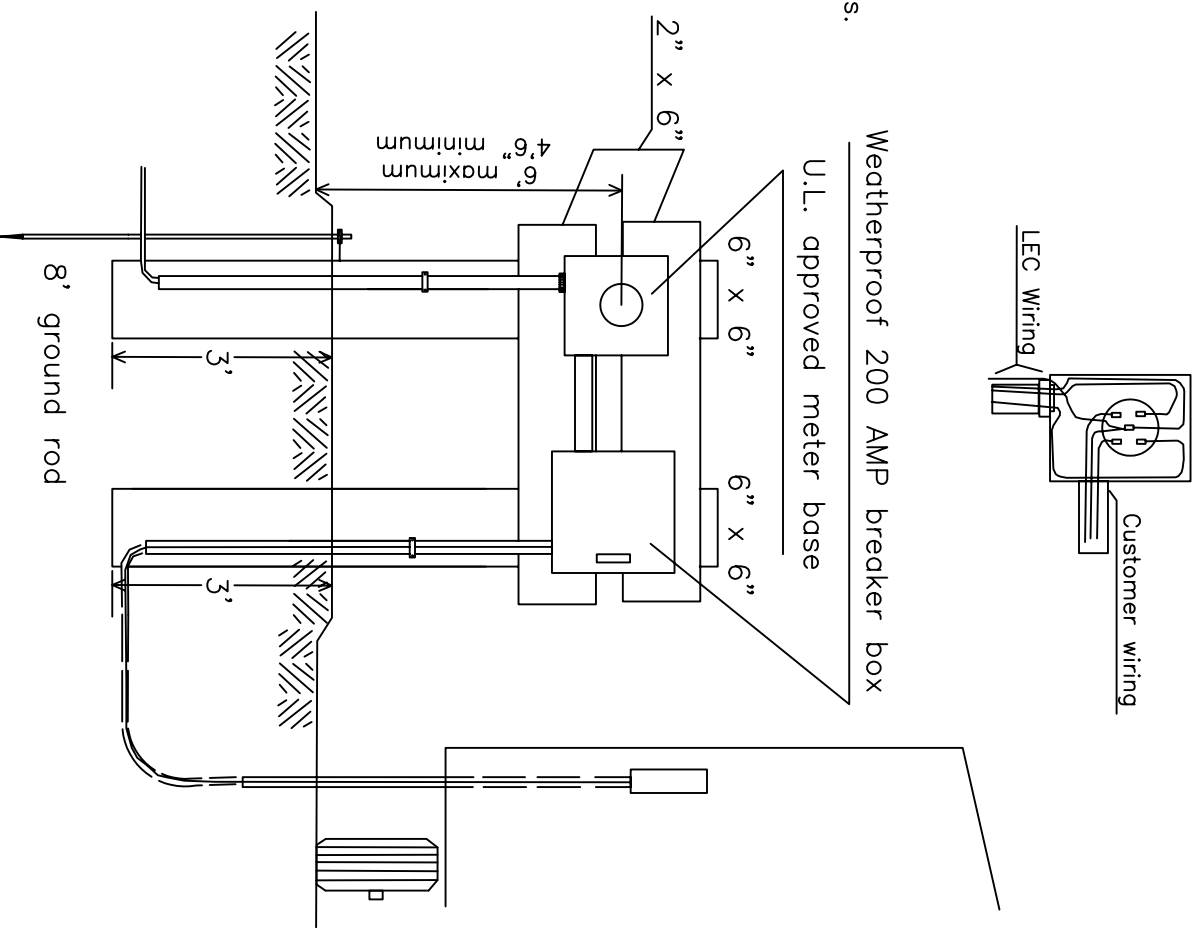
TO BE FURNISHED AND INSTALLED BY CUSTOMER

1. U.L. approved meterbase of appropriate size.
2. Closure plate for meterbase.
3. Weatherproof enclosure for circuit breaker with cover.
4. 5/8" x 8' galvanized or copper coated ground rod with U.L. approved ground clamp.
5. Number 6 copper ground wire attached to meter base and ground rod.
6. Load side connectors for meter base.
7. (2) 6" x 6" x 8' treated timber poles with 2" x 6" back boards.
8. Customer's wire system (4 wire).
9. Address or lot number to be permanently marked on the inside and outside of the meter socket cover.

* NOTE:

1. **Meter location must be spotted by LEC personal prior to installation.**
2. Underground service to a mobile home will be determined on the basis of the spotted meter location and proximity to existing LEC facilities.
3. Service entrance minimum wire size as follows:
 100 AMP – 1/0 Aluminum or # 2 Copper
 200 AMP – 4/0 Aluminum or 2/0 Copper
4. 6" x 6" timbers treated with less than 0.6 lbs./cu. ft. of preservative are not recommended for long term contact with the ground. The owner is responsible for the maintenance of these timbers.

METERBASE WITH BREAKER BOX



* Pole must be properly tamped and secure.
 DO NOT POUR CONCRETE